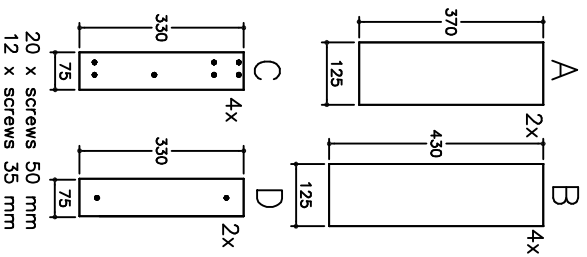
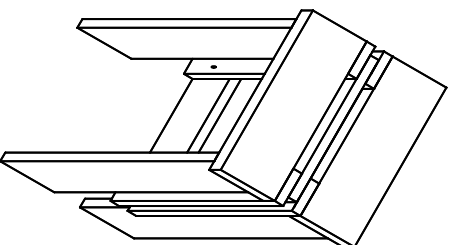
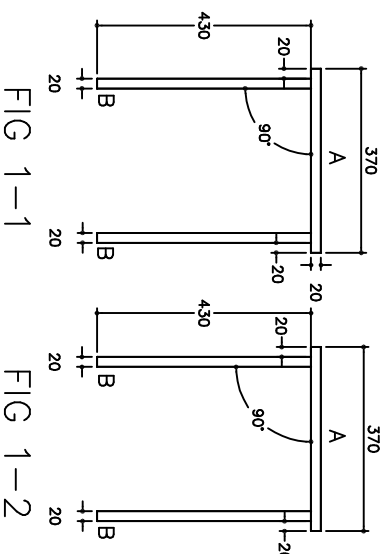


# SLAT-STOOL



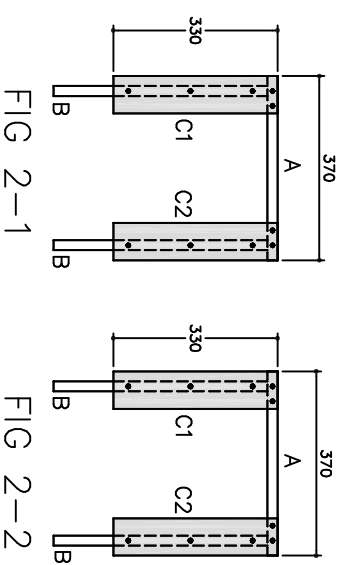
design: Martin Dieterle

## STEP 1



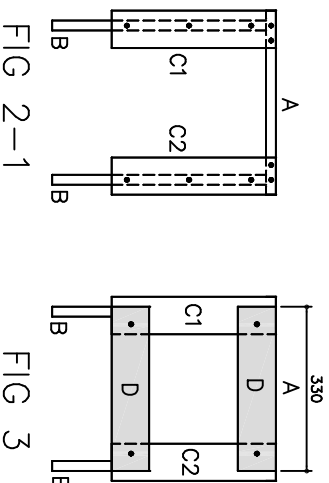
Place FIG 1-1 and FIG 1-2 on a flat surface as shown. make sure to respect the 90° angle. To measure the distance of 20 mm you can use pieces D

## STEP 2

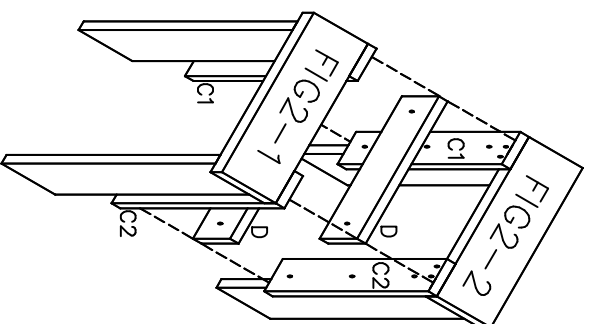


Place pieces C on FIG 1-1 and FIG 1-2 as shown (C1: turn piece C to the left / C2: turn piece C to the right). Screw piece C1 and C2 on FIG 1-1 and FIG 1-2.  
Use 5 screws (50 mm) on each side.

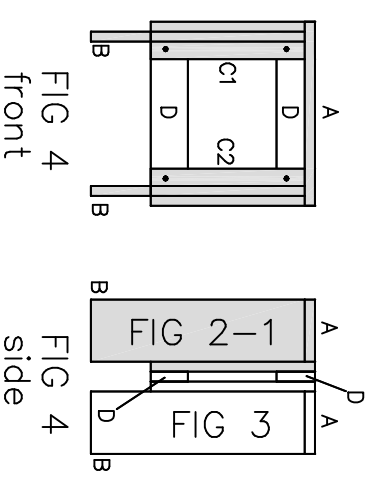
## STEP 3



Place pieces D on FIG 2-2 as shown.  
Screw pieces D on FIG 2-2. Use 2 screws (35 mm) for each piece.



## STEP 4



Take FIG 2-1 and turn it. Place FIG 2-1 on FIG 3.  
Then screw FIG 2-1 on FIG 3 use 8 screws (35 mm)